

# Neuropsicología Clínica

## Fundamentación y trayectoria en conjunto de la psicología

ANTONIO E. PUENTE  
UNIVERSITY OF NORTH CAROLINA WILMINGTON

Universidad Autónoma de Ciudad Juárez  
09.20.13

# Looking Back at Looking Forward

- Puente, A. E. (1990). The future of clinical neuropsychology. *Archives of Clinical Neuropsychology*.
- Presidential address. National Academy of Neuropsychology, Dallas, Texas.

# Defining Clinical Neuropsychology

- History
- Purpose
- Method

# Limitations of Clinical Neuropsychology

- Bias
- Procedural
- Base Rates
- Dichotomous Data
- Executive Functions
- ADLs
- Rehabilitation
- Competency & Credentialing

# Education & Training

- Students
- Faculty
- Curriculum
- Education
- Diversity
- Policy

# Relevance & Application

- Science
- Education
- Practice
- Application
- Policy

# Science:

# Cultural Neuropsychology

([uncw.edu/people/puente](http://uncw.edu/people/puente))

- United States
  - WAIS
- Foreign
  - Puerto Rico (San Miguel)
  - Russia (Agranovich & Glozman)
  - South Africa (Lazarus)
  - Spain (Perez Garcia, Vilar Lopez & Fasfous)

# Science:

# Roger W. Sperry

([rogersperry.info](http://rogersperry.info))

- Chemo-affinity
- Split-brain
- Consciousness
- Values



# Policy:

## Current Procedural Terminology

- American Medical Association
  - Developed by Surgeons (& Physicians) in 1966 for Billing Purposes
  - 8,000+ Discrete Procedures divides approximately 16% of the US GDP
- Center for Medicare & Medicaid Services
  - AMA Under License by US Federal government
  - Congressional level

# Current Procedural Terminology

(psychologycoding.com)

- **AMA House of Delegates**
  - 109 Medical Specialties
- **HCPAC**
  - 11 Allied Health Societies (e.g., APA) since 1993
- **CPT Editorial Panel**
  - 17 Voting Members
    - 11 Appointed by AMA Board
    - 1 each from BC/BS, AHA, HIAA, CMS
    - 2 Non-medical physicians voted on by HCPAC
      - Psychologist (permanent seat)
      - Occupational Therapist (rotating seat)

# Coding for Professional Services

<b>Problem</b>	<b>Psychiatric</b>	<b>Neuropsych</b>	<b>Health Psych</b>
Diagnosis	DSM	ICD	ICD
Interview	90791	96116	96150/51
Testing	96101/12	96118/19	96150/51
Intervention	90834	96152/43	96152/53

# Practice

(clinicalneuropsychology.us)

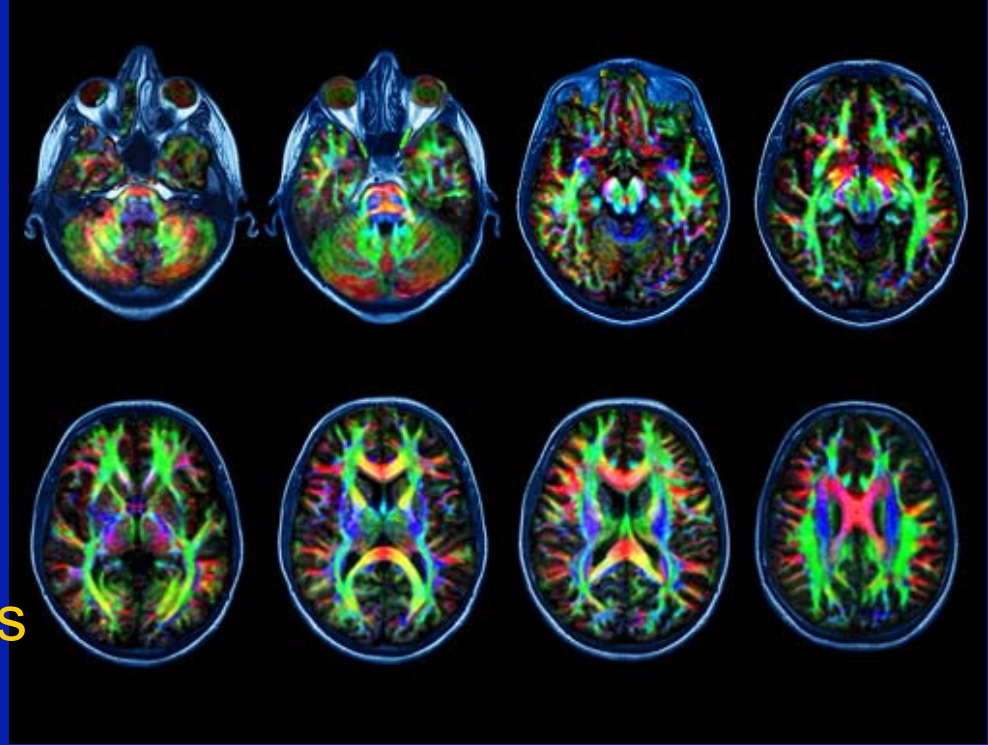
- Clinical
  - Assessment
  - Rehabilitation
  - Case Management
- Forensic
  - Disability
  - Compensation
  - Civil Litigation
  - Criminal (Capital)

# Directions: Puente

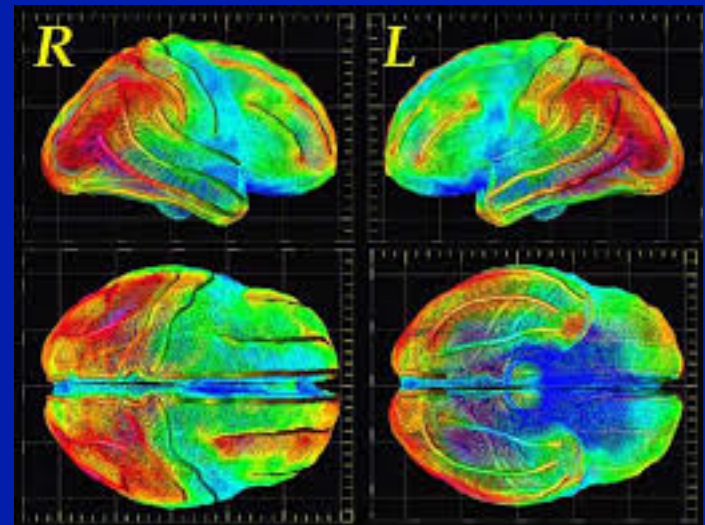
- Purpose
- Questioning
- Philosophical
- Paradigm Shift

# Direction: Students' View

- Connectional anatomy
- Functional organization
- Actuarial approaches to quantifying brain structures



Will neuroimaging interface with functional analyses?



# Students' Perspective: Predictions

- Self-administered annual brain health assessments via computers
- Athletic concussions tests via a mobile devices
- Web-based brain training to for driving improvement
- Biometrics-aided meditation in corporate and consumer wellness
- iPad-based cognitive screenings will inform more diagnoses of Alzheimer's disease and MCI than neuroimaging
- Online cognitive training will be available for multiple disorders
- Insurers will launch an educational campaign for "brain fitness"



# Puente's Predictions

- Clinical neuropsychology will not be judged on what we have done thus far but what we will do. (Puente, ACN, 1990)
- I believe in it...
  - Two of three children do (neuro)psychology
  - Third? Political economics...



# The Future

- Going Back to our Roots to Move Forward with Our Destiny
- Neuropsychology will Allow Psychology to be Accepted at the Highest Level in Both Science and in Health Care

# Contact Information

- Websites

- Coding = [www.psychologycoding.com](http://www.psychologycoding.com)
- Univ = [www.uncw.edu/people/puente](http://www.uncw.edu/people/puente)
- PDFs, etc. = [www.antonioepuente.com](http://www.antonioepuente.com)
- Practice = [www.clinicalneuropsychology.us](http://www.clinicalneuropsychology.us)

- E-mail

- University = [puente@uncw.edu](mailto:puente@uncw.edu)
- Practice = [clinicalneuropsychology@gmail.com](mailto:clinicalneuropsychology@gmail.com)

- Telephone

- University = 910.962.3812
- Practice = 910.509.9371